



Trends in Senior Living....

David Carliner



David D. Carliner is Executive Vice President of Shelter Development and Brightview Senior Living. Mr. Carliner's responsibilities include development and acquisitions of all of the Company's product lines. Mr. Carliner has served as a Commissioner of the Baltimore City Commission on Aging and as President of CHAI, a community based organization focused on supporting seniors in a variety of residential settings.



Cynthia Shonaiya

AIA, LEED AP BD+C



As a principal in HCM's Senior Living studio, Cindy Shonaiya has over 25 years of experience, spanning three continents. A senior living specialist, she has been team leader and principal-in-charge on a number of senior living, and multi-family projects, including the award winning Brightview Bethesda and Clare Court Convent & Apartment projects. Cindy's strengths lie in her ability to successfully balance outstanding design with practical sustainability initiatives.



Choices for Seniors

- Senior Apartments
- Active Adult Communities
- Independent Living (IL)
- Assisted Living (AL)
 - Enhanced Care Assisted Living
- Memory Care (MC)
- Skilled Nursing (SN):
 - Short Term Rehab
 - Long Term Care
 - Sub-Acute Care
 - Acute Care
- Life Plan Communities (CCRC)

Payment Options

- Entrance fee
- Rental





Trends

- Walkable Urban & Towncenter locations
- Community & Building Amenity Integration
- Contemporary Architecture
- Hospitality-inspired interiors
- Multiple Dining options
- Health and Wellness
- Intergenerational Living



Challenges

- Restricted Parking Availability
 - Building code impacts
- Non-combustible construction
 - Fire Alarms
 - Sprinkler systems
- Concrete construction
- Higher grade windows
 - Security concerns
- Vertical transportation challenges



Walkable TownCenter Locations



ROCKVILLE
TOWN
SQUARE



BRIGHTVIEW WEST END

Walker's Paradise

Daily errands do not require a car.

Walk Score

91



BRIGHTVIEW SEVERNA PARK

Car-Dependent

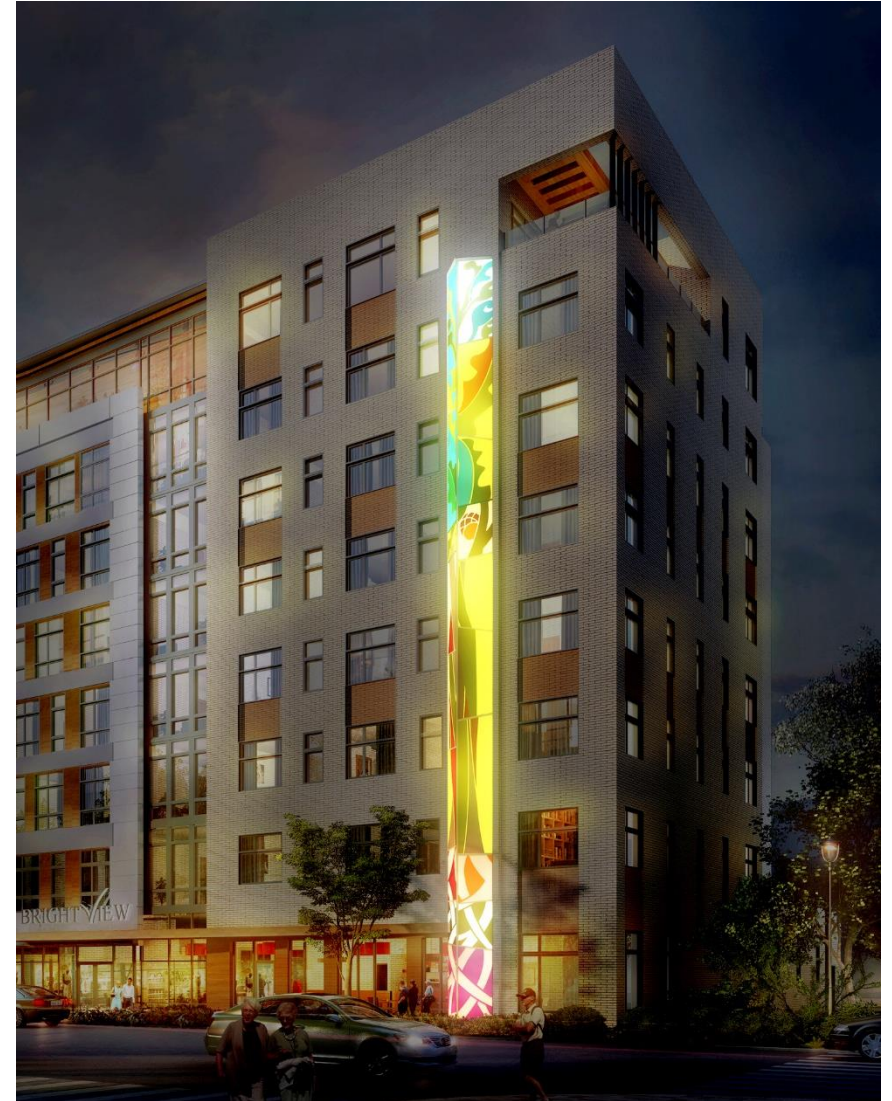
Most errands require a car.

Walk Score

49

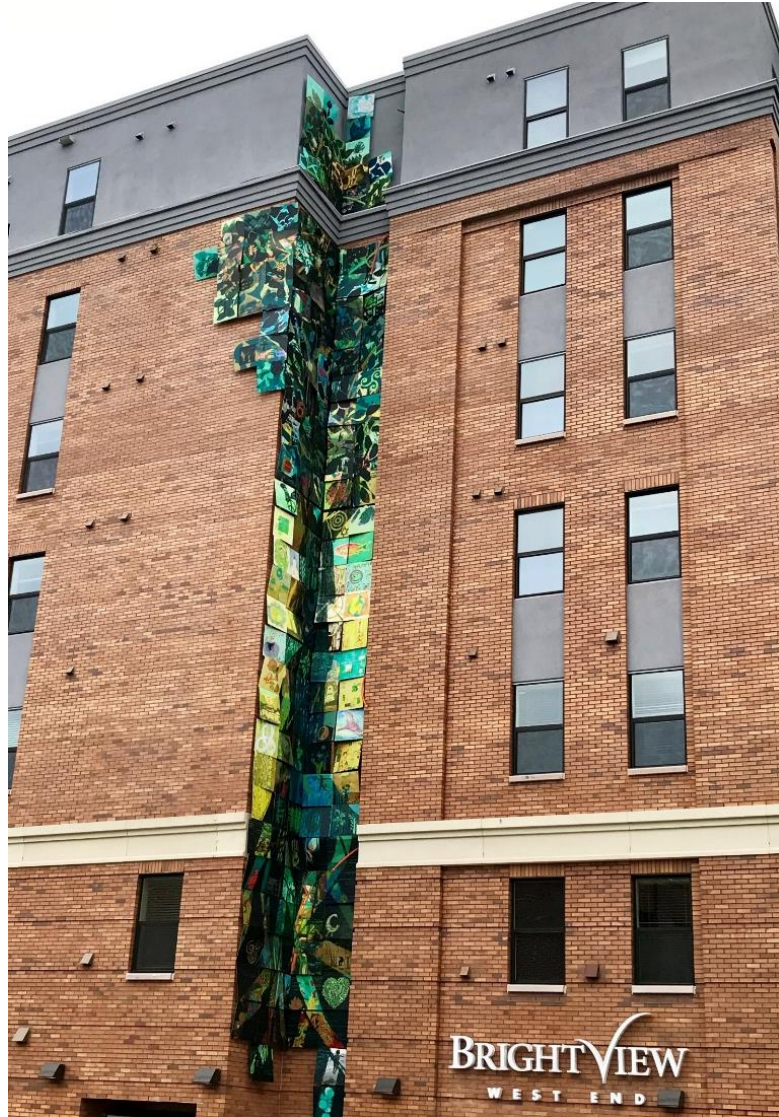


Community Integration





Community Integration & Participation





Contemporary Architecture

2017 Design for Aging
Merit Award Winner



Brightview Bethesda Roof Deck



Hospitality-Inspired Interiors





Multiple Dining Options





Health and Wellness





Health and Wellness





Intergenerational Programming



Rockville Town Square Plaza



Trends

- Walkable Urban & Towncenter locations
- Community & Building Amenity Integration
- Contemporary Architecture
- Hospitality-inspired interiors
- Multiple Dining options
- Health and Wellness
- Intergenerational Living

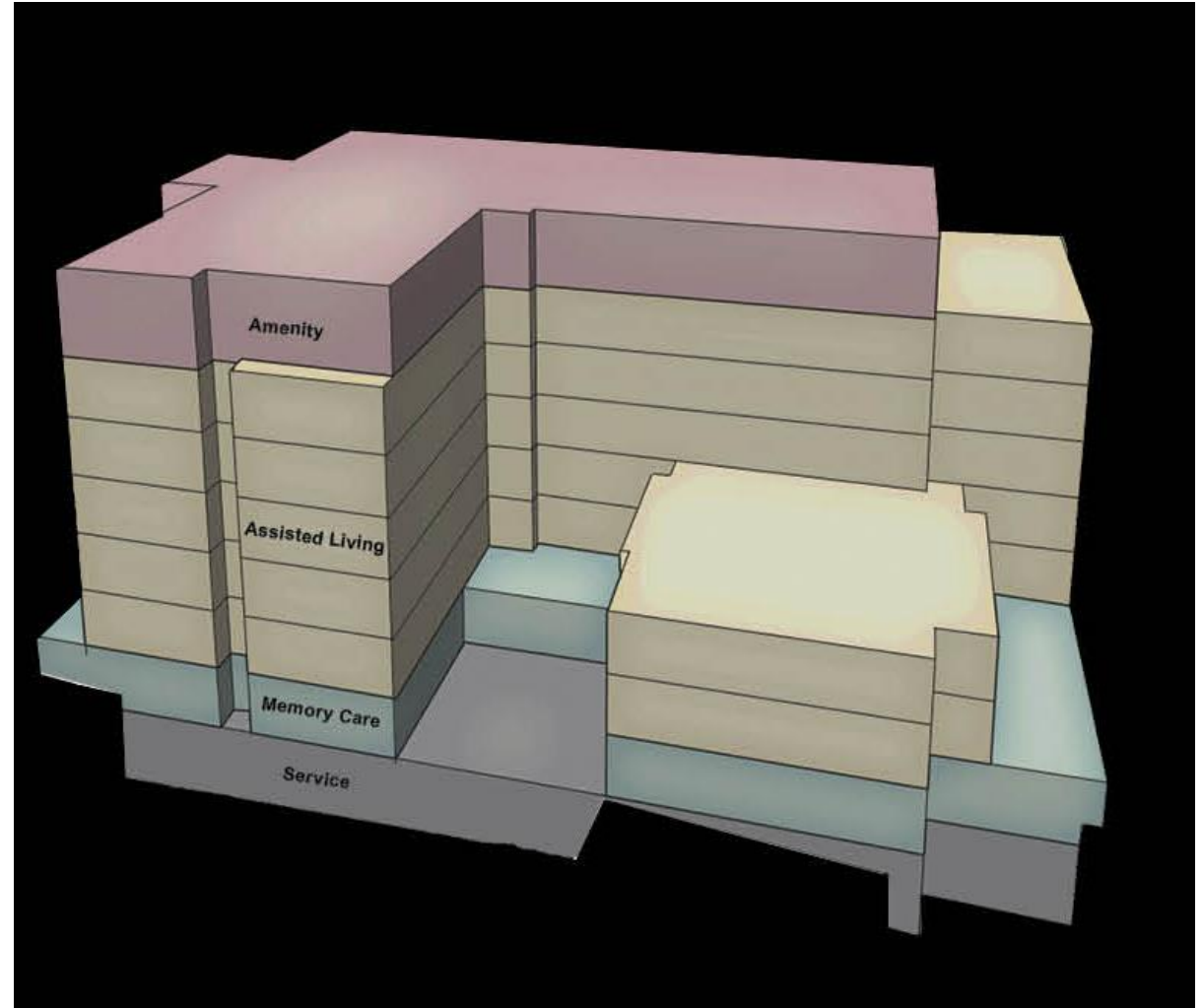
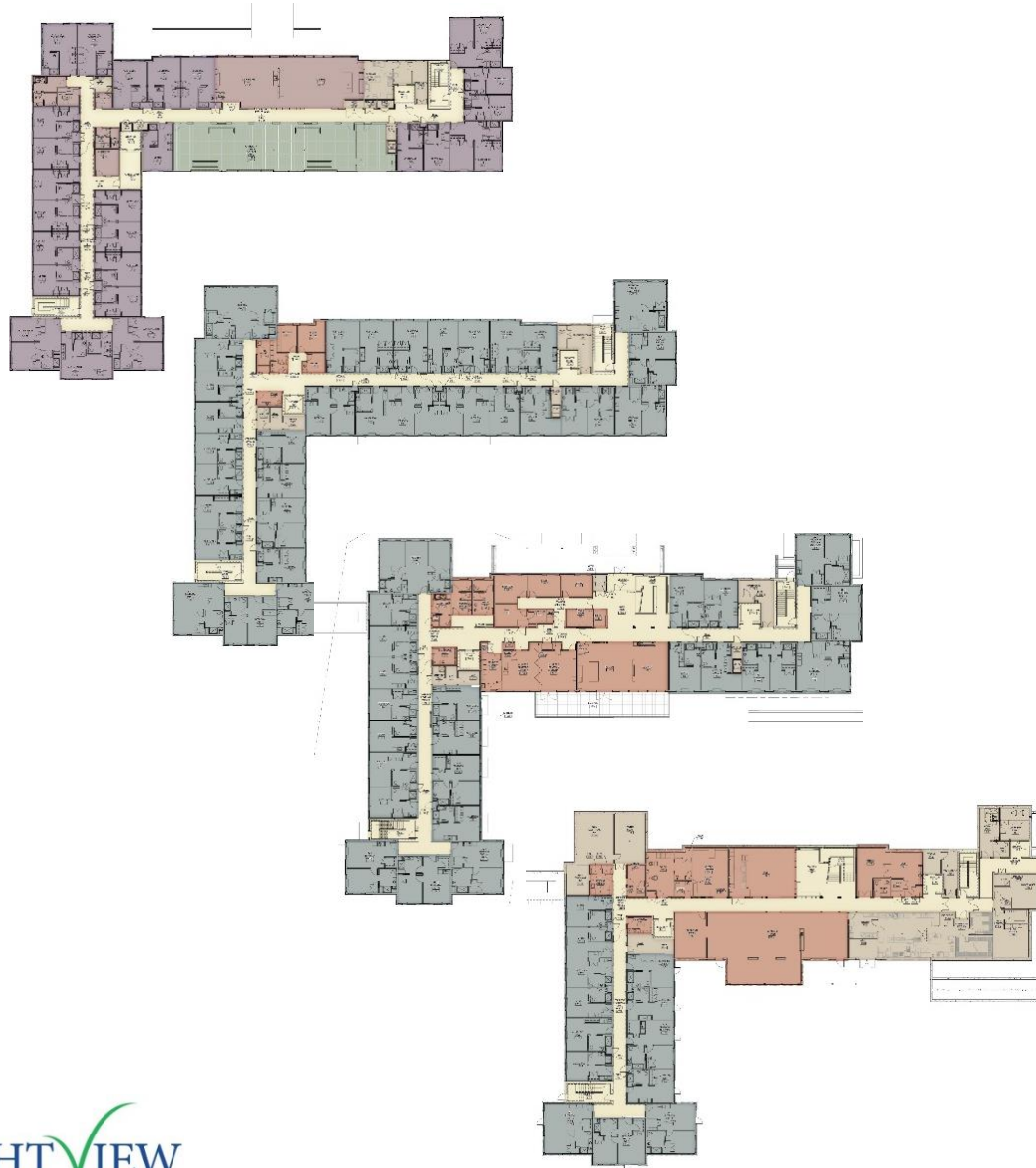


Challenges

- Restricted Parking Availability
 - Building code impacts
- Non-combustible construction
 - Fire Alarms
 - Sprinkler systems
- Concrete construction
- Higher grade windows
 - Security concerns
- Vertical transportation challenges



Program Modifications





Project Implications

	No. of Units	Building Size	Site	Units/Acre	No. of Floors
Brightview Greentree (2009 Suburban)	201	172k sq.ft.	10.8 acres	18.6	3 Floors plus Terrace
Brightview West End (2015 TownCenter)	195	215k sq.ft.	1.2 acres	162	8 Floors plus Garage

